

Mattress Moving and Handling

Five steps to ensure your mattresses remain fit for purpose

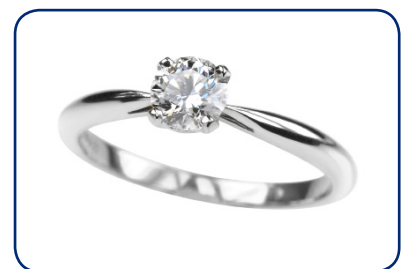
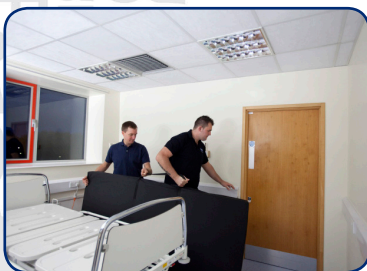
Step 1. Two people required to lift/carry a mattress.

Step 2: Avoid contact with sharp objects including jewellery, finger nails and abrasive surfaces.

Step 3: Do not drag.

Step 4: Do not transport in roll cages unless completely protected from sharp edges of cage.

Step 5: Avoid brushing/scraping the mattress surface against walls, door frames, door catches, locks etc.



This poster was developed in line with the recommendations made in the BHTA Protect Rinse and Dry guideline document and should be used alongside trust/organisation protocol.

Part no. 1578359



Invacare Ltd Pencoed Technology Park Pencoed Bridgend CF35 5AQ
T: 01656 776222 F: 01656 776220 E: uk@invacare.com W: www.invacare.co.uk

 **Thinkpressurecare**
www.thinkpressurecare.co.uk


Yes, you can.®