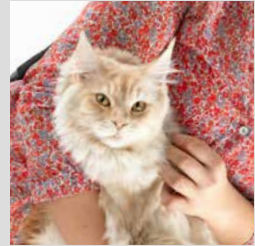




 **küschall Advance[®]**
EXPERIENCE SOMETHING DIFFERENT



IT'S TIME FOR SOMETHING NEW

The *küschall Advance*® is designed from a complete new starting point compared to the usual way of conceiving new wheelchairs, considering the most important need of the users – the seating!



STAY CONNECTED

Francisco Mira alias 'Paco', is very famous here at **küschall**. As a quality specialist working with **küschall** for 25 years, he has been central to helping develop many of the evolutions and innovations to our active performance wheelchairs. A Spaniard by birth, Paco is a dedicated person who works with great enthusiasm and brings precision to everything he does.





SEAT PLATE AT THE HEART

Made out of carbon, the rigid carbon seat plate is the main part of the *küschall Advance®*. Everything else has been designed and developed around it.

The final design of the carbon seat plate was influenced not only by innovative ideas regarding advanced super lightweight materials, but also by a desire for an increase of the stiffness of the entire construction. The result is an outstanding driving performance and responsiveness combined to a high level of comfort. The small stripes at the rear of the seat plate follow the shape of the user's body and thus improve the pressure distribution on the seat surface.



CATCH THE MOMENT

Andrea Von Büren: Talent doesn't come with old age, is what we believe at *küschall*, and at just 21 years old, Andrea Von Büren perfectly proves our point: Andrea is successfully balancing a double career of student and athlete, winning five gold medals and one silver medal during the World Junior Sport Games in Dubai. This young charming and optimistic lady is always catching the positive moments of her active life in order to achieve her dreams and goals.



ADJUSTABLE LIKE NO OTHER

Configurable and adjustable like no other wheelchair, the **küschall Advance®** has been designed to be customized and adjusted easily to each user's specific needs. Not until today has it been possible to provide a wheelchair with stepless adjustability at any time, with an accuracy in millimeters on following parts: rear seat-to-floor height, front seat-to-floor height, centre of gravity, knee-to-heel length, front wheel supporter angle, brakes position, backrest angle.



BE YOURSELF

Dergin Tokmak: It might not actually be necessary to introduce Dergin Tokmak, due to his celebrity as a participant in “Supertalent 2011,” the German version of “Britain’s got talent.” After seven years as a performer with the ‘Cirque du Soleil,’ Dergin is one of the most famous paraplegic artists performing in Europe. Every day presents a new opportunity for him to show how he can push his own limits, and thousands of fans follow his dance performances on crutches, both on TV and online.



QUICK RELEASE FRAME OPTION

Why could your wheelchair not match your mood or your clothes? The Quick Release Frame option gives you the opportunity to change front frames set and also ensures easy transportation of your rigid wheelchair. Switch from one front frame set to another with the “Quick Release Frame” option and adapt your wheelchair to your mood of the day!



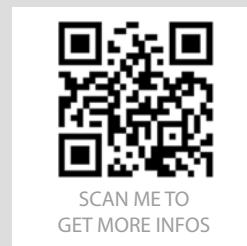
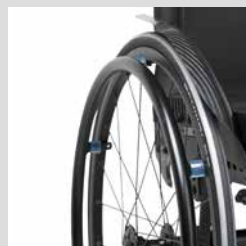
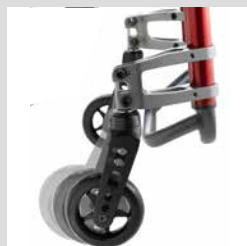
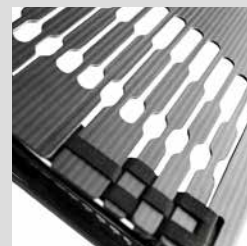
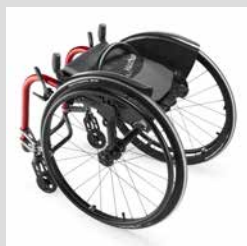
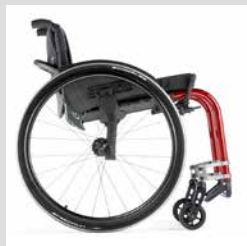
Complete front frame set can be separately purchased. For more informations, please ask your nearest **küschall** provider or your local Invacare contact



PLAY WITH COLOURS

Diane Arele: Henri Matisse once said: "Creative people are curious, flexible, persistent and independent, with a tremendous spirit of adventure and a love of play." Diane Arele really lives up to this description and her paintings are imbued with these attributes. You may come across her as you stroll the boulevards of Paris, as she is likely to be on the streets of the French Capital, looking for inspiration and immersing herself in the artistic atmosphere of the City of Light.





BE A WINNER

Heinz Frei: You might know the expression: "What doesn't kill you makes you stronger." This epithet could have been written for Heinz Frei, who, despite a life-threatening accident in 1978 during a mountain race, became one of the world's most successful disabled athlete in racing and handcycling (Heinz holds 22 titles in the Paralympics, 12 titles in world championship and a handful of world records). Heinz's secret? "believing in yourself is the best way to accomplish miracles".



TECHNICAL DATA



Seat width:
340 – 460 mm
in increments
of 20 mm



Seat depth:
360 – 520 mm
in increments
of 20 mm



Seat height:
front: 450 – 550 mm
rear: 370 – 490 mm
stepless adjustable



Backrest height:
270 – 480 mm
in increments of 15 mm



Knee-to-heel length:
220 – 520 mm
stepless adjustable



Backrest angle:
78°/82°/86°/90°/94°



Total width:
Seat width + 170 mm



Centre of gravity:
80 mm/ 95 mm/ 110 mm/
125 mm/ 140 mm
stepless adjustable



Total length:
75°: approx. 830 mm
90°: approx. 760 mm



Total weight
unloaded:
approx. 7.5 kg



Max. user weight:
125 kg



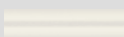
Transport weight
w/out rear wheels:
approx. 5.3 kg

All measurements and weights indicated are based on seat width 400 mm and seat depth 400 mm in the lightest and most compact configuration possible. Weight and measurements can change with the different configurations.

COLOURS



Royal blue



Ivory white



Royal Red



Flashy yellow



Mirror Natural



Golden beach

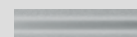


Black matt

CPS (Colour Power Set)



Techno-
anthracite



Chrome



B-blue



Champagne



Comet red



Olive



Artic blue

CONTACTS

Küschall AG | Benkenstrasse 260 | CH-4108 Witterswil | Switzerland | Phone +41 (0) 61 487 70 70 | Fax +41 (0) 61 487 70 79 | www.kuschall.com

Eastern Europe, Middle East, Russia & CIS : Invacare European Distributor Organisation | Kleiststraße 49 | 32457 Porta Westfalica - Germany | Tel: +49 (0)57 31 754 540 | Fax: +49 (0)57 31 754 541 | edo@invacare.com

Küschall® is a registered trademark. Every effort has been made to ensure that the contents of this publication are fully up-to-date at the time of going to print. As part of its ongoing improvement of products, Küschall AG reserves the right to modify existing models at any time. Any use of this publication, or of parts thereof, as well as any reproduction of images, must have the written consent of Küschall AG.

The company, trademark and logo of Küschall AG belong to the Invacare® Group.

WWW.KUSCHALL.COM



Follow us on facebook



MADE IN SWITZERLAND



 **küschall Advance®**
EXPERIENCE SOMETHING DIFFERENT